

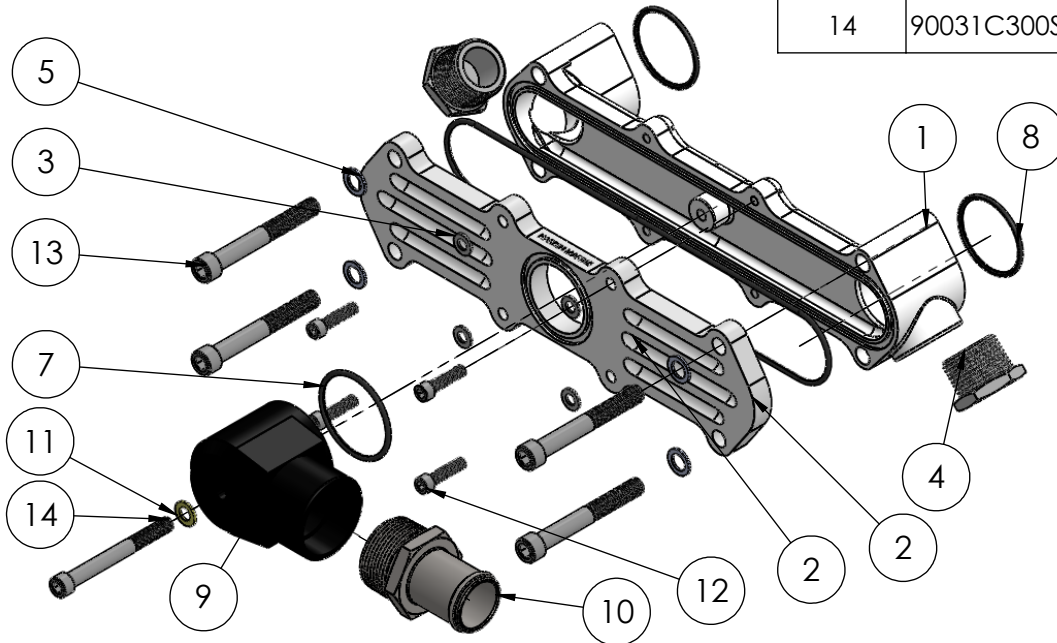
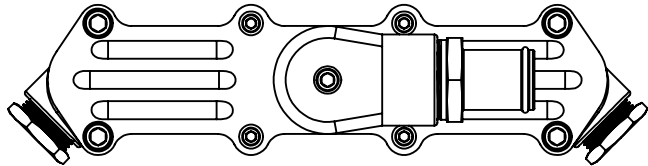
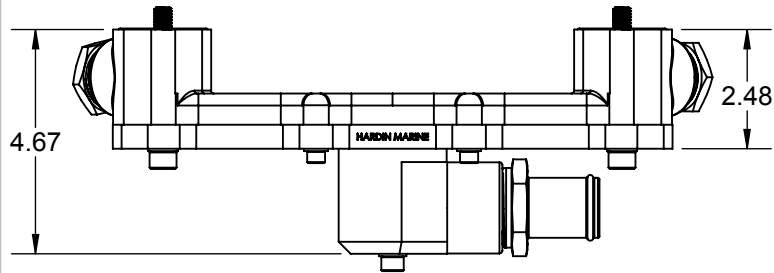
HARDIN MARINE 11 Industry Dr. Palm Coast, FL 32137
386-445-2500 / FAX 386-445-1122

PART NO.
625-4370

TITLE:

SINGLE INLET CROSSOVER

www.hardin-marine.com



| ITEM NO. | PART NUMBER | DESCRIPTION | QTY. |
|----------|--------------|-------------------------------|------|
| 1 | 625-4350 | CROSSOVER | 1 |
| 2 | 625-4352 | COVER, SINGLE INLET CROSSOVER | 1 |
| 3 | 90025AN-STSS | WASHER, 1/4 AN | 4 |
| 4 | 540-223000 | 1" NPT PIPE PLUG | 2 |
| 5 | 90037AN-STSS | WASHER - FLAT - SS - 7/16AN | 4 |
| 6 | 625-1170 | ORING | 1 |
| 7 | 625-1134 | O-RING | 1 |
| 8 | 625-1131 | O-RING | 2 |
| 9 | 625-4359 | INLET, SINGLE - LOW PROFILE | 1 |
| 10 | 540-222175 | FITTING, 1-1/4 BARB | 1 |
| 11 | 90031AN-STCO | WASHER, 5/16 AN | 1 |
| 12 | 90025C100SHS | BOLT, SHCS, 1/4-20x1.00 | 4 |
| 13 | 90037C300SHS | BOLT, SHCS, 3/8-16 | 4 |
| 14 | 90031C300SHS | BOLT - SHCS - 5/16-18x3" | 1 |

INSTALLATION INSTRUCTIONS;
 1) #2,3,6,7,9,11, 12 & 13 ARE INSTALLED AT THE FACTORY
 2) USE LITHIUM GREASE ON #8 ORING.
 2) ORING #8 SEAL AGAINST THE ENGINE BLOCK.
 3) INSTALL CROSSOVER THE ENGINE USING #13 BOLT & #5 WASHER. TORQUE TO 30 FT. LBS.
 4) USE LIQUID PIPE SEALANT ON #4 PIPE PLUGS.

THIS DRAWING IS CONFIDENTIAL AND IS SUPPLIED ON EXPRESS CONDITION THAT IT SHALL NOT BE LENT, COPIED OR DISCLOSED TO ANY OTHER PERSON OR USED FOR ANY OTHER PURPOSE WITHOUT WRITTEN CONSENT OF HARDIN MARINE INC.. BREACH OF THIS CONTRACT WILL HOLD AND IT'S PRINCIPALS LIABLE FOR LOSS AND DAMAGES.