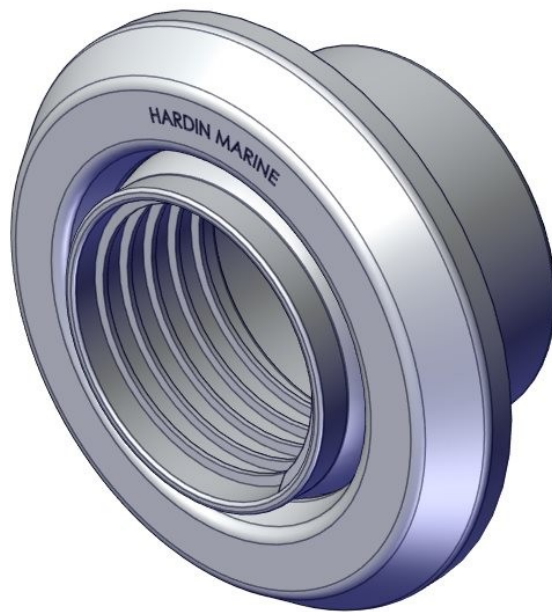




SWIVEL RIGGING HOSE KIT

755-1050, 755-1051, 755-1052
& 755-1053



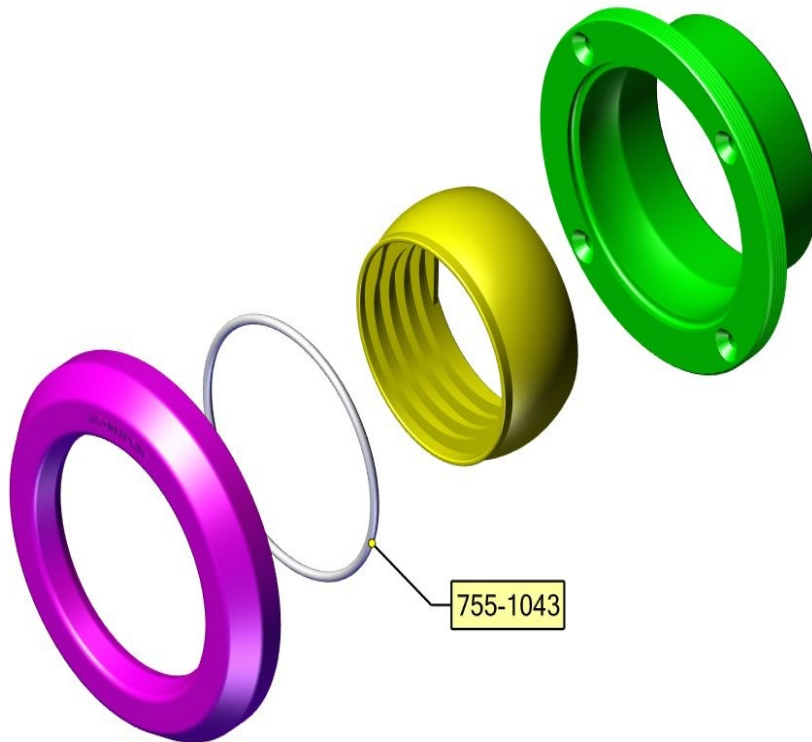
SWIVEL RIGGING HOSE KIT



SWIVEL RIGGING THRU HULL

755-1050, 755-1051, 755-1052
& 755-1053

Components Contained in 755-1050 Kit



755-1051 COMES WITH STAINLESS BEZEL.

755-1052 COMES WITH HOSE.

755-1053 COMES WITH STAINLESS BEZEL & HOSE.

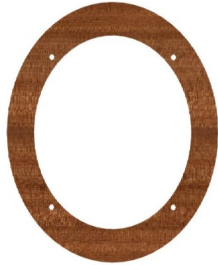


SWIVEL RIGGING HOSE KIT

755-1050, 755-1051, 755-1052
& 755-1053

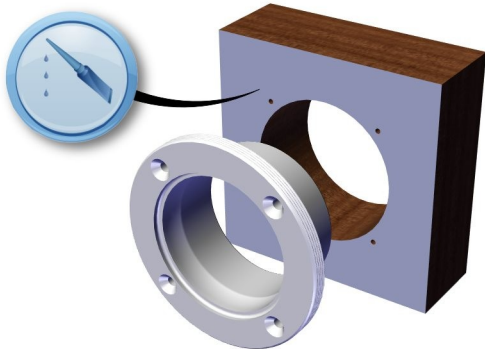
Step 1

- Use previous page template to position drill the required mounting holes for the base.



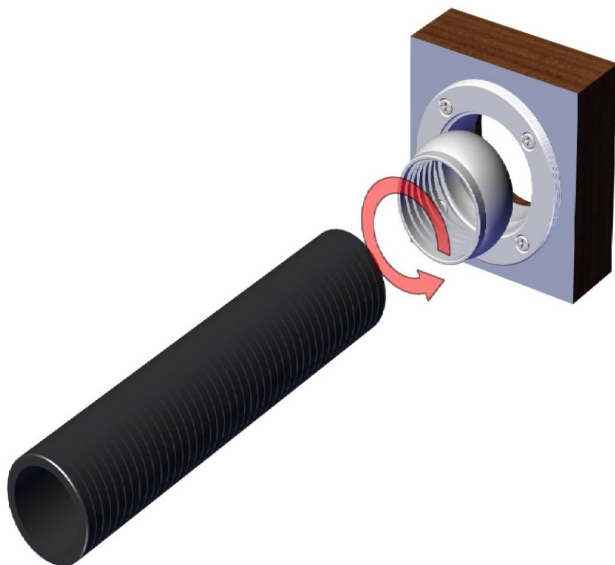
Step 2

- Use 5200 silicone between base and transom.
- Mount to transom using #10 screws, not supplied in the kit.



Step 3

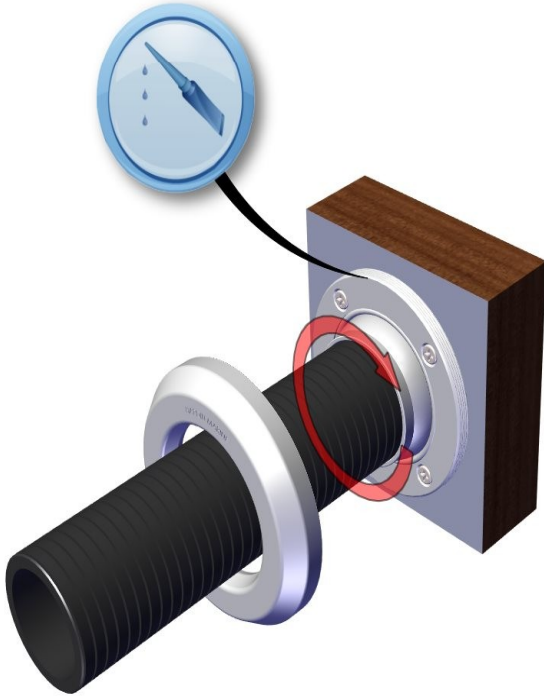
- Turning counter clockwise, install hose into the swivel.
- Install swivel and hose in the base.





SWIVEL RIGGING HOSE KIT

755-1050, 755-1051, 755-1052
& 755-1053



Step 4

- Install o-ring into the base groove.
- Apply 5200 to the outside threads on the base.
- Screw cover onto the base. Tighten till the swivel has a slight drag and the swivel rotates freely.