

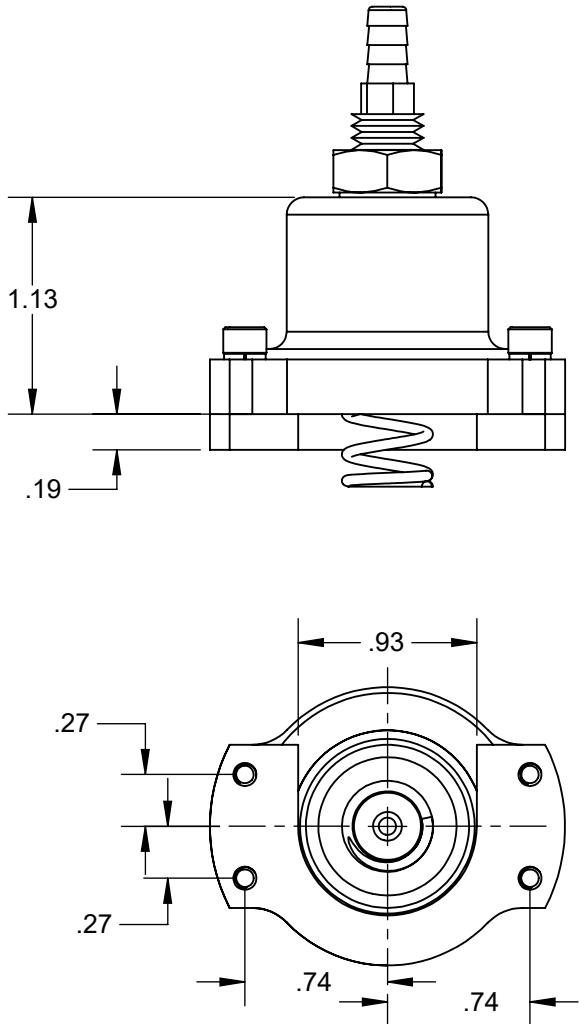
HARDIN
MARINE

11 Industry Dr. Palm Coast, FL 32137
386-445-2500 / FAX 386-445-1122

PART NO.
620-15529

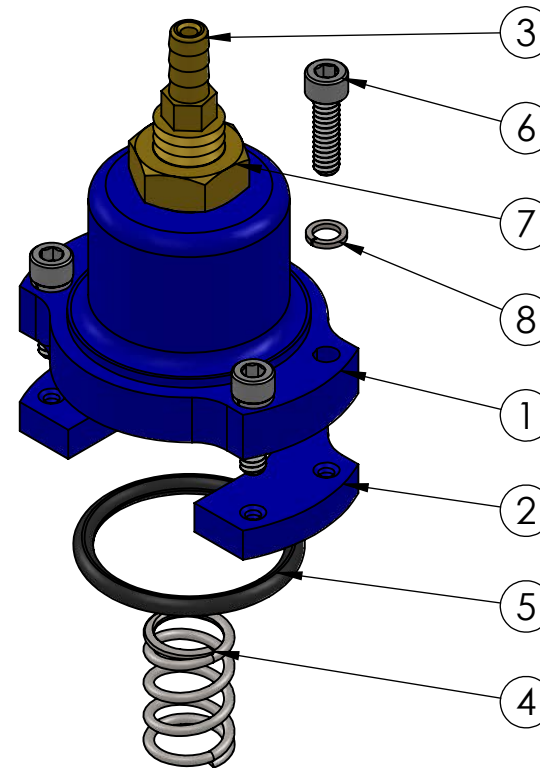
TITLE:
**ADJUSTABLE EFI/MPI FLOW
COMMAND REGULATOR**

www.hardin-marine.com



ITEM NO.	PART NUMBER	DESCRIPTION	QTY.
1	620-15536	BASE, FUEL REG.	1
2	620-15537	CLAMP, FUEL RED.	1
3	620-15538	SCREW, FUEL REG.	1
4	620-15539	SPRING, FUEL REG.	1
5	625-1120	O-RING	1
6	90006C050SHS	BOLT, SHCS, 6-32x.50	4
7	90037CP-HNBR	NUT, BRASS, 3/8-16	1
8	90006SL-THSS	WASHER, #6 SPLIT	4

NOT SHOWN \varnothing 1/8 x 6" VACCUM LINE



Adjustable Fuel Pressure Regulator Installation Instructions for Mercury EFI 620-15529 (BLUE)

NOTE: These instructions assume you have working knowledge of hand tools, their operation and of the vehicle of which you are working. If you do not feel comfortable with this assumption, it is recommended that you take the parts and vehicle to a qualified facility for the installation of these parts. It is recommended you have access to a factory shop manual for installation. Hardin Marine Performance Products accepts no responsibility for improper or faulty installation of the parts, or for the accuracy or omissions in these instructions.

1. Turn off all battery power to engines, or disconnect battery cables.
2. Remove fuel pressure regulators from engine, be careful not to spill fuel, clean spilled fuel up immediately to avoid fire hazard.
3. Secure fuel regulator, using a hacksaw or tubing cutter, cut off the top 3/8" of the regulator.
4. Deburr any sharp edges with a file.
5. Install the spring onto adjusting screw spring seat inside cover, place "O" ring in the groove on the bottom of the cover and install the cover over the fuel regulator.
6. Place the retainer on the bottom side of the factory crimp, and install four supplied retaining screws from the cover into the retainer, using Loctite on all 4 bolts.
7. Adjust lead screw until resistance is felt on the lead screw, and then turn approximately two turns down. Do not bottom out the lead screw against the regulator as over tightening could damage the diaphragm.
8. Install the regulator back onto the engine, and secure the fuel connections.
9. Replace the battery cables, and turn the ignition key several times to pressurize the fuel system. Ensure there are no fuel leaks before starting the engine.
10. Using an accurate fuel pressure gauge, set the fuel pressure to the desired pressure, then tighten the jam nut on the adjusting screw to prevent the pressure from changing.
11. Install the supplied vacuum line from regulator to manifold vacuum source in plenum.

