

HARDIN 11 Industry Dr. Palm Coast, FL 32137
MARINE 386-445-2500 / FAX 386-445-1122

PART NO.

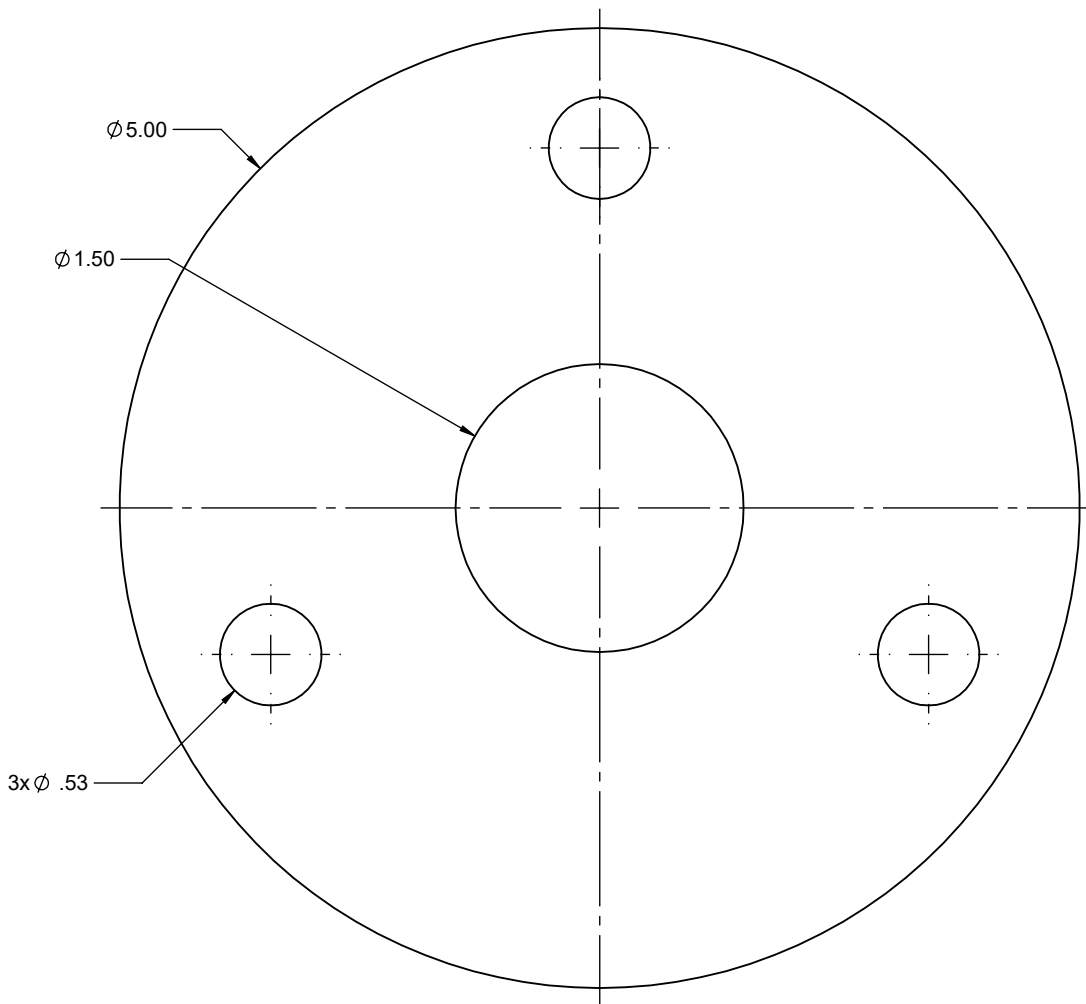
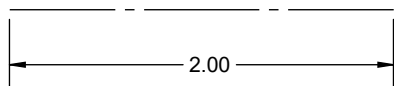
TITLE: MAYFAIR TILT STEERING COLUMN
DRILL TEMPLATE

www.hardin-marine.com

DRILL TEMPLATE USAGE:

- 1) MAKE SURE SCALE SIZE IS CORRECT.
- 2) 5" IS THE TILT HELM O.D..
- 3) TAPE TEMPLATE ON THE DASH.
- 4) USE A CENTER MARK TO MARK THE 4 HOLE LOCATION.
- 5) USE A 17/32 FOR THE 3 MOUNTING STUDS,
- 6) USE 1-1/2 HOLE SAW FOR CENTER,

THIS MUST BE PRINTED ON
FULL SCALE 1:1. MEASURE
THE BELOW LINE TO MAKE
SURE OF TEMPLATE SIZE.



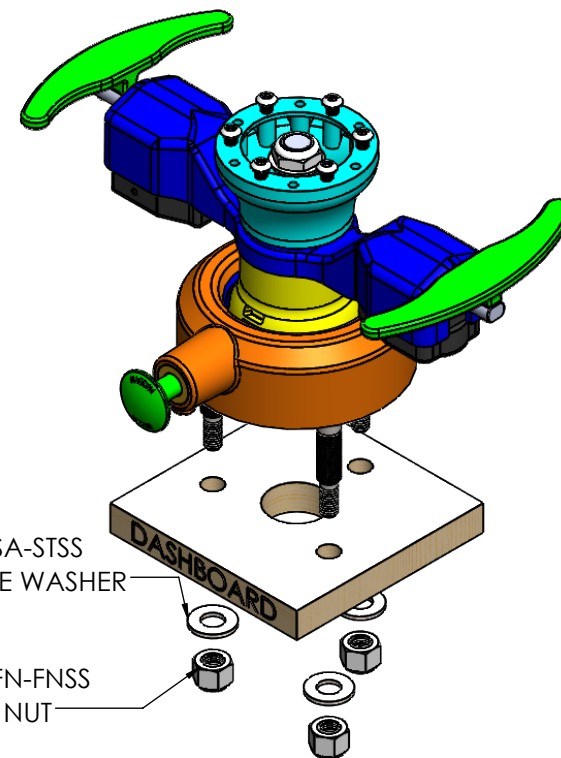
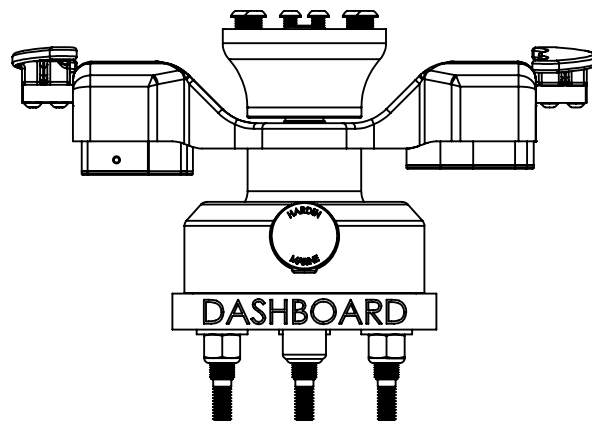
BOTTOM

HARDIN 11 Industry Dr. Palm Coast, FL 32137
MARINE 386-445-2500 / FAX 386-445-1122

PART NO.
137-9775

TITLE: 5-1/2 MAYFAIR DAN FOSS TILT STEERING COLUMN
w/ PADDLE TRIM INSTALLATION - STEP 1

www.hardin-marine.com



INSTALLATION INSTRUCTIONS:

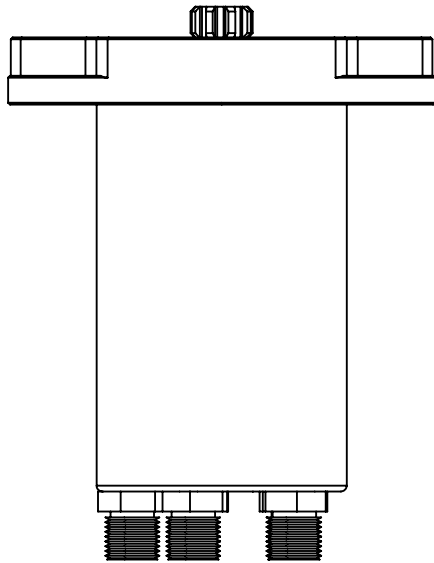
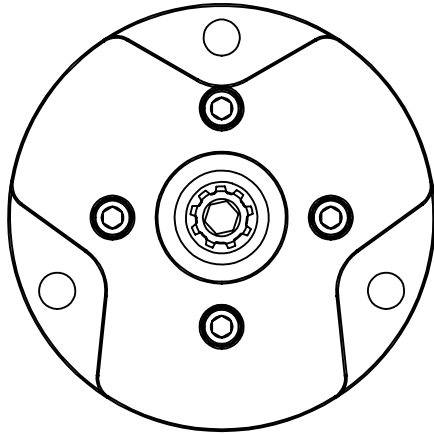
- 1) USE THE SUPPLIED TEMPLATE TO DRILL HOLES IN THE DASHBOARD.
- 2) APPLY ANTI-SIEZE TO BOTH THE 1/2 AND 3/8 THREADS ON THE 3 STUDS
- 3) INSTALL HELM THROUGH THE DASH.
- 4) USING 5/8 WRENCH, INSTALL COLUMN TO THE DASH WITH THE 1/2 NUTS AND WASHERS.

HARDIN 11 Industry Dr. Palm Coast, FL 32137
MARINE 386-445-2500 / FAX 386-445-1122

PART NO.
137-9775

TITLE: 5-1/2 MAYFAIR DAN FOSS TILT STEERING COLUMN
w/ PADDLE TRIM INSTALLATION - STEP 2

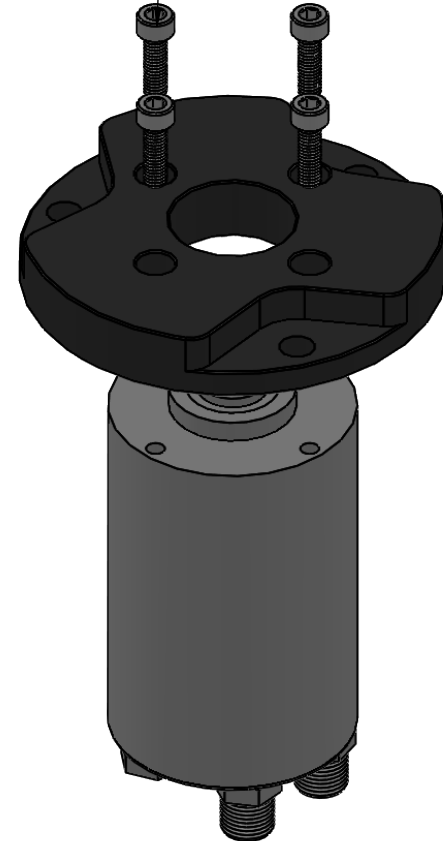
www.hardin-marine.com



INSTALLATION INSTRUCTIONS:

- 1) APPLY RED LOCTITE TO THE BOLTS.
- 2) USING 5MM HEX SOCKET TORQUE TO 120 IN. LBS..

900M06C020SHS
6MM x 1.00 x 20MM



HARDIN 11 Industry Dr. Palm Coast, FL 32137
MARINE 386-445-2500 / FAX 386-445-1122

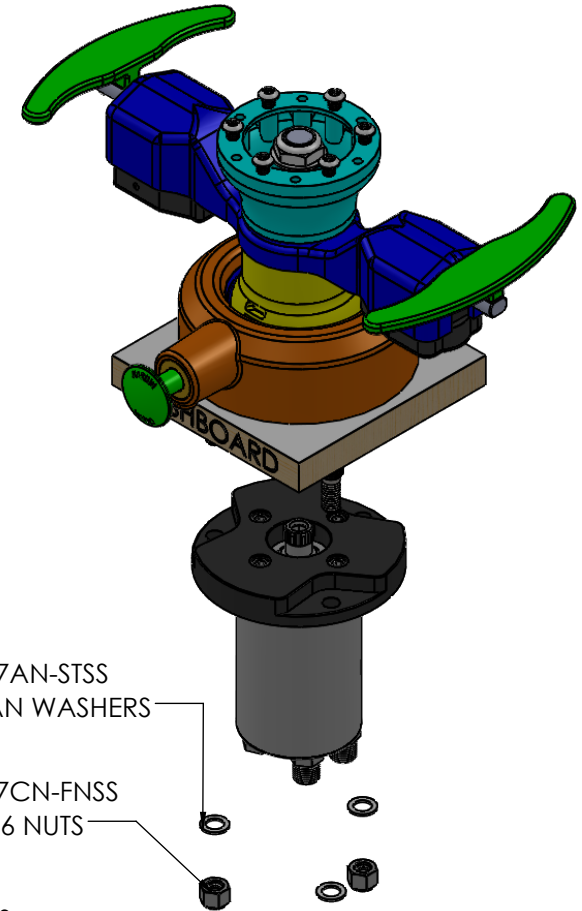
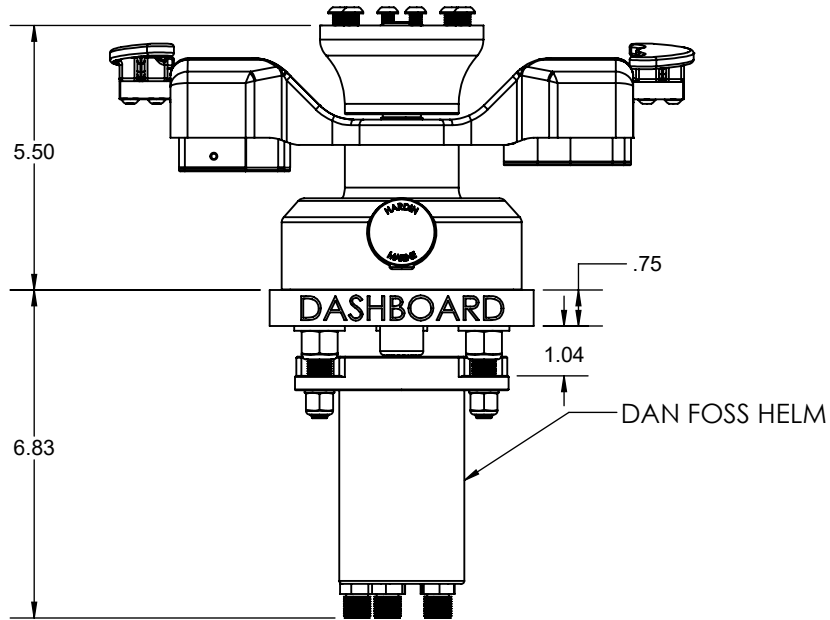
PART NO.
137-9775

TITLE:
5-1/2 MAYFAIR DAN FOSS TILT STEERING COLUMN
w/ PADDLE TRIM INSTALLATION - STEP 3

www.hardin-marine.com

NOTES:

- 1) WHEEL ADAPTERS ARE THREAD 1/4-20 IN BOTH DINO ϕ 2.91 & MOMO ϕ 2.750 BOLT PATTERNS.
- 2) SUPPLIED WITH (6) 1/4-20x5/8 BOLTS.
- 3) TILT MOVES 12.5° AND 25° IN BOTH DIRECTIONS.



INSTALLATION INSTRUCTIONS:

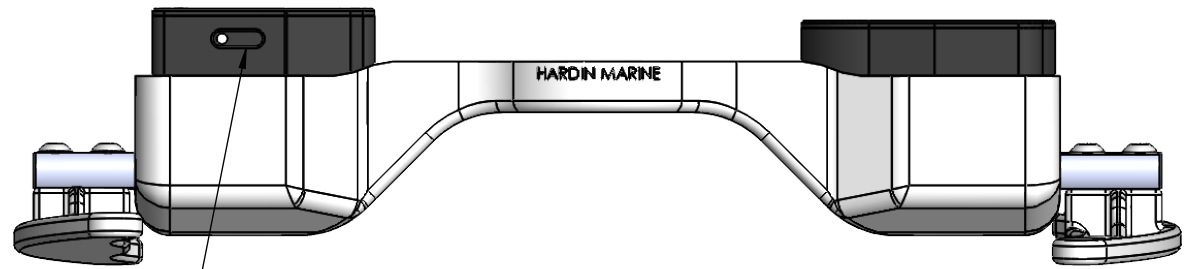
- 1) APPLY ANTI-SIEZE TO THE 3/8 THREADS ON THE 3 STUDS
- 2) SLIDE ADAPTER RING OVER THE 3 STUDS,
- 3) USING 9/16 SOCKET TO INSTALL 3/8 NUTS AND WASHERS. TORQUE TO 30 FT. LBS..

MAYFAIR ELECTRONICS

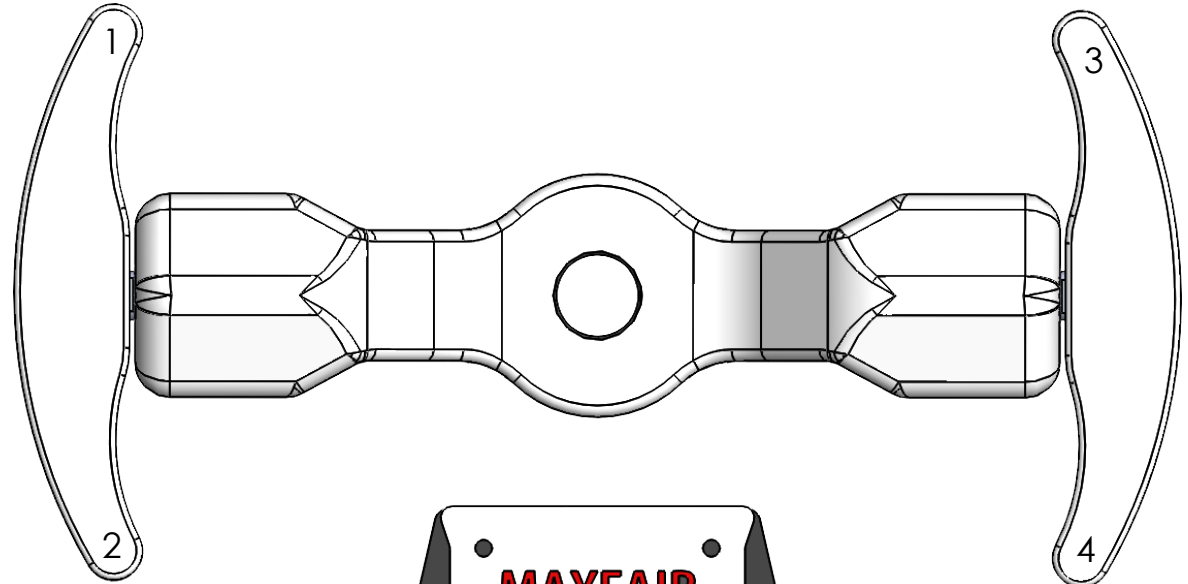
PART NO.
137-9765i

TITLE:
MAYFAIR BLUETOOTH PADDLE TRIM CONTROLER

www.hardin-marine.com

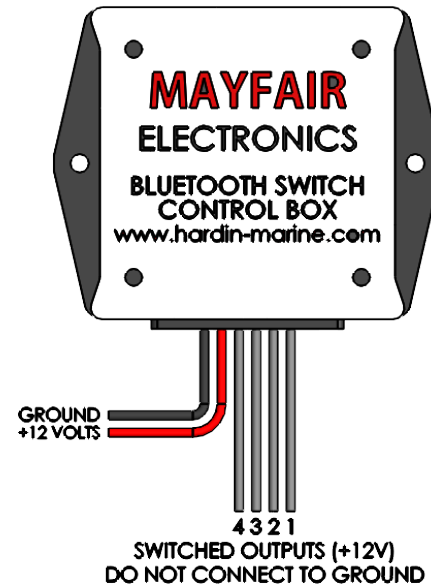


CHARGING PORT. LED LIGHT IS ON THE OTHER SIDE.



• INSTALLATION INSTRUCTIONS:

- WARNING: DO NOT CONNECT GRAY WIRES TO GROUND.
- WARNING: POWER INPUTS (RED AND BLACK) WIRES MUST NEVER BE CROSS-CONNECTED.
- 12 volt power supply must have 10 amp inline fuse.
- #1-#4 outputs (gray wires) are switched to +12 volts when the cooresponding Paddle Trim button is pressed.
- Maximum load of 10amps per switch.
- Comes with USB magnetic charger,
- Paddle Trim LED is RED while charging and turns BLUE when fully charged.

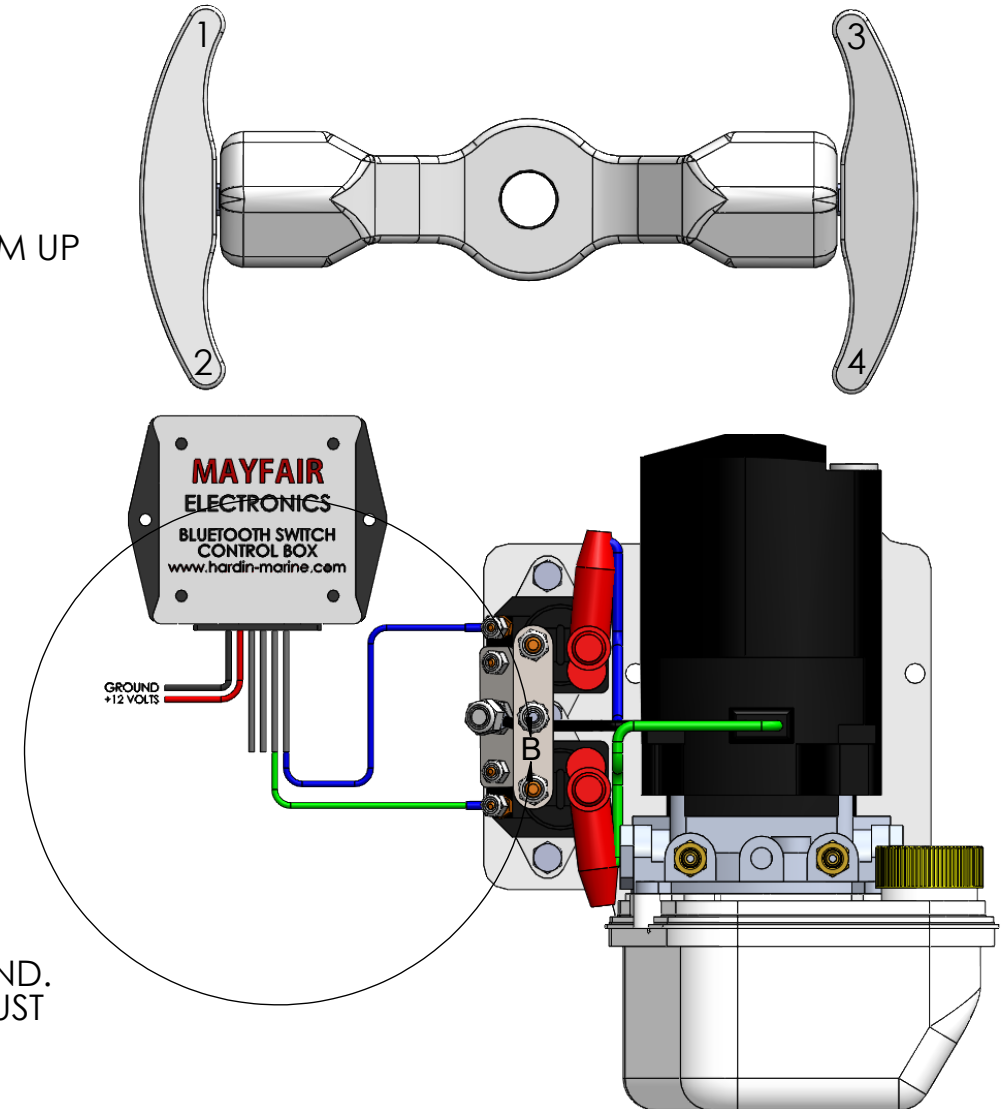
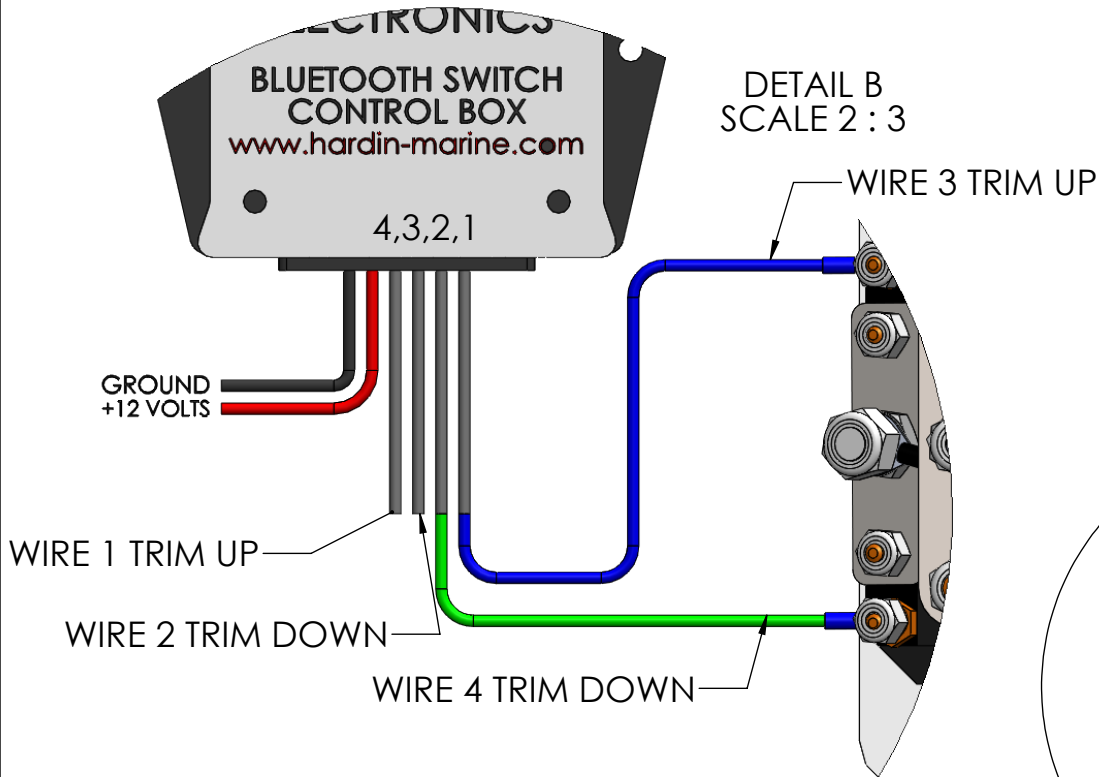


MAYFAIR PERFORMANCE

PART NO.
137-9765

TITLE:
MAYFAIR BLUETOOTH PADDLE TRIM CONTROLER

www.mayfairperformance.com



INSTALLATION INSTRUCTIONS:

- WARNING: DO NOT CONNECT GRAY WIRES TO GROUND.
- WARNING: POWER INPUTS (RED AND BLACK) WIRES MUST NEVER BE CROSS-CONNECTED.
- 12 volt power supply must have 10 amp inline fuse.
- #1-#4 outputs (gray wires) are switched to +12 volts when the cooresponding Paddle Trim button is pressed.
- Maximum load of 10amps per switch.
- Comes with USB magnetic charger,
- Paddle Trim LED is RED while charging and turns BLUE when fully charged.

THIS DRAWING IS CONFIDENTIAL AND IS SUPPLIED ON EXPRESS CONDITION THAT IT SHALL NOT BE LENT, COPIED OR DISCLOSED TO ANY OTHER PERSON OR USED FOR ANY OTHER PURPOSE WITHOUT WRITTEN CONSENT OF MAYFAIR HYDRAULICS INC.. BREACH OF THIS CONTRACT WILL HOLD AND IT'S PRINCIPALS LIABLE FOR LOSS AND DAMAGES.