

ELIMINATE THE CONFUSION!

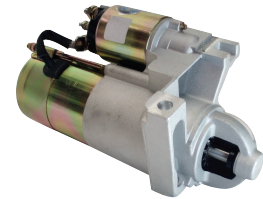
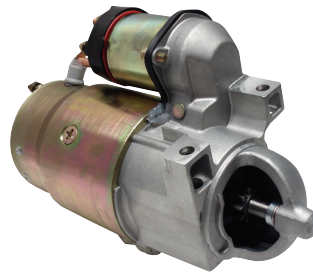
Starter Application Guide for Inboard & I/O Marine Engines Using GM Blocks . . .

BOTTOM MOUNT APPLICATION

12.75" Flywheel "Standard" Rotation Engines

Older GM blocks using a 12.75" flywheel with "standard rotation" use API Marine starter #10064. Early style Delco 10MT starters with straight-bolt pattern use 1 long bolt and 1 short bolt to mount starter to block. These starters weigh approximately 21 lbs. and are used on Mercruiser, OMC, Volvo & other marine engines. These starters are normally found on 4 and 6 cylinder engines, but they can also be found on some 8 cylinder applications.

API Marine starter #10064

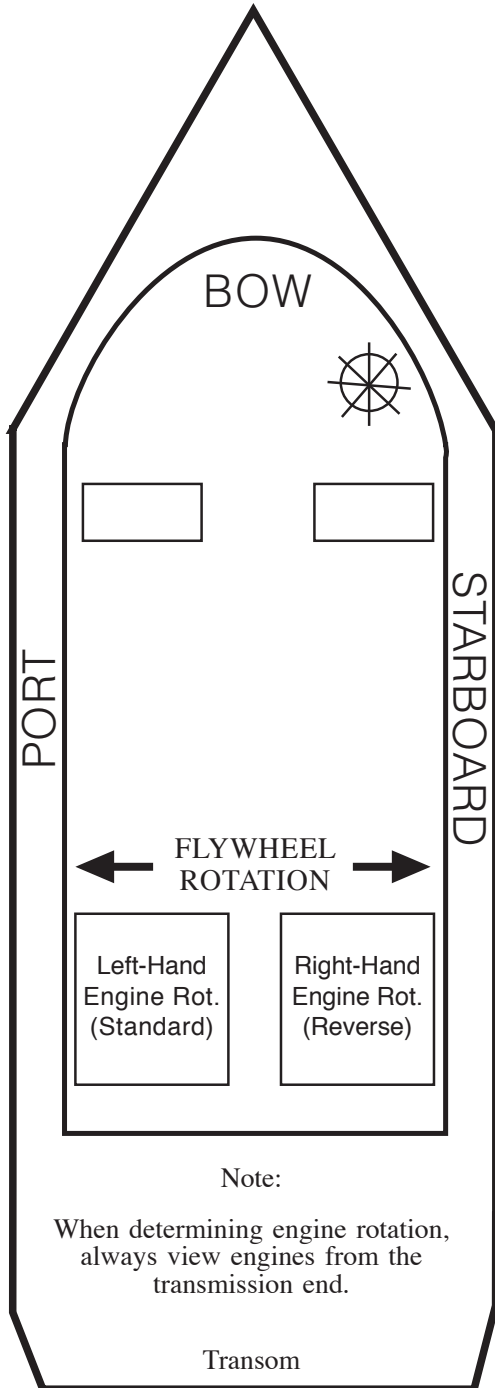
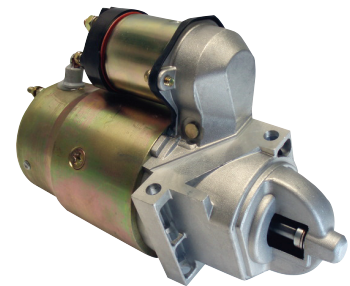


API Marine starter #10096

Late GM blocks using a 12.75" flywheel with "standard rotation" use API Marine starter #10096. Late style Delco PMGR starters with straight-bolt pattern use 1 long bolt and 1 short bolt to mount starter to block. These starters weigh approximately 10 lbs. and are used on Mercruiser, OMC, Volvo & other marine engines. These starters are normally found on 4 and 6 cylinder engines, but they can also be found on some 8 cylinder applications.

14" Flywheel "Standard" Rotation Engines

Older GM blocks using a 14" flywheel with "standard rotation" use API Marine starter #10071. Early style Delco 10MT starters with staggered-bolt pattern use 2 long bolts to mount starter to block. These starters weigh approximately 21 lbs. and are used on 6 and 8 cylinder engines. They are used on Mercruiser, OMC, Volvo and other marine engines.



Note:

When determining engine rotation, always view engines from the transmission end.

Transom

ELIMINATE THE CONFUSION!

Starter Application Guide for Inboard & I/O Marine Engines Using GM Blocks . . .

BOTTOM MOUNT APPLICATION (continued)

14" Flywheel "Standard" Rotation Engines

Late GM blocks using a 14" flywheel with "standard rotation" use API Marine starter #10095 or #10099. Late style Delco PMGR starters with staggered-bolt pattern use API #BK95 which includes 2 long bolts to mount starter to block. These starters weigh approximately 10 lbs. and are used on 6 and 8 cylinder engines. They are used on Mercruiser, OMC, Volvo & other marine engines.



12.75" Flywheel "Reverse" Rotation Engines

Older GM blocks using a 12.75" flywheel with "reverse rotation" use API Marine starter #10064LH. Early style Delco 10MT starters with straight-bolt pattern use 1 long bolt and 1 short bolt to mount starter to block. These starters weigh approximately 21 lbs.

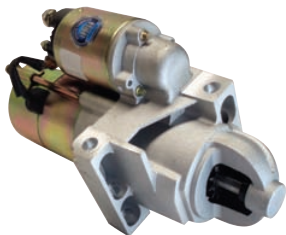


Most late model boats reverse the prop shaft rotation in the transmission AND NOT in the engine. Because of this, use API Marine starter #10096 (new) on late GM blocks using a 12" flywheel with "reverse rotation."



14" Flywheel "Reverse" Rotation Engines

Older GM blocks using a 14" flywheel with "reverse rotation" use API Marine starter #10071LH. Early style Delco 10MT starters with staggered-bolt pattern use 2 long bolts to mount starter to block. These starters weigh approximately 21 lbs.



Most late model boats reverse the prop shaft rotation in the transmission AND NOT in the engine. Because of this, use API Marine starter #10095 or #10099 on late GM blocks using a 14" flywheel with "reverse rotation."



3.0L Vortec Engines with 14" Flywheel

Late model 3.0L Vortec Engines with a One Piece Rear Main Seal have a 14" Flywheel and use a New API Marine Starter #10099.



ELIMINATE THE CONFUSION!

Starter Application Guide for Inboard & I/O Marine Engines Using GM Blocks . . .

TOP MOUNT APPLICATION

Many marine engines mount the starter on top of the engine in back of the bell housing. Standard rotation GM engines using a top mount starter use API Marine starter #10059LH and GM blocks with “reverse rotation” use API Marine starter #10059.

API Marine offers four styles of new Top Mount Starters:

API Marine 10MT Delco Style

High Torque
Weight: 23 lbs.
API #10059 C.W. Rotation
#10059LH C.C.W. Rotation



Delco Remy 14MT

High Torque
Weight: 21 lbs.
API #10059SP C.W. Rotation
#10059SPLH C.C.W. Rotation



Delco Gear Reduction Style

High Torque
Weight: 10 lbs.
API #10059DRPGLH
C.C.W. Rotation



API Marine

Denso Gear Reduction Style
High Torque
This is the premier of
the top mount starters
Weight: 10 lbs.
API #10059 ND C.W. Rotation
API # 10059NDLH C.C.W. Rotation



Tech Tips & Important “Need-to-Know” Information . . .

- **Check Batteries:** “Always make sure batteries are fully charged and load tested. Defective and/or inadequate batteries are one of the most common causes of problems in marine electrical systems!”
- **Check Connections:** “Be sure all connections and terminals are tight and clean. Also, battery cable terminals need to be tight and should have a gap between the top of the terminal and the side of the clamp!”
- **Check Wiring:** “Remember to always tag wiring when removing any electrical unit. Also, feel the lines for soft spots. Soft spots usually indicate the wire is corroded and needs to be replaced!”
- **Check for High Resistance:** “Be sure to check for voltage drops. Low voltage will ruin your electrical components and shorten the life of a battery!”

REMANUFACTURED FORD & PRESTOLITE INBOARD AND I/O STARTER MOTORS

*Exchange core required. New replacements available, see page 54

ST 32

Factory Reman 12V

Fits **Crusader** & other applications using **Ford** engines. Aluminum D.E. Housing extends 2" into flywheel. 2-Bolt Mount. C.W. Rotation



ST 32LH

Factory Reman 12V

Same as 10032 except this starter is C.C.W. rotation.



ST 61

Factory Reman 12V

Fits **Universal** Atomic Four 9-tooth, C.W. Rotation



ST 75

Factory Reman 12V

Fits **Chrysler** Marine V8 318 C.I. Engines. Rplc. **Chrysler** # 2875928
Prestolite #'s MDT 7001,7021
2-Bolt Mount with 1-threaded Hole
C.W. Rotation
Replace with New API Gear Reduction Starter # 10075ND



ST 75LH

Factory Reman 12V

Rplc. **Chrysler** #'s 2095509, 2855927 & 2875927
C.C.W. Rotation, **Prestolite** #'s MDT 7010,7022
Replace with New API Gear Reduction Starter # 10075NDLH



ST 79

Factory Reman 12V

Fits **Chris Craft**, **Crusader** & **Owens** **Flagship**.
3-Bolt Mount with two 3/8" mounting holes and one threaded 5/16" mounting hole.
C.W. Rotation
Prestolite #'s MDU 6006, 6007, 6011, 6012, 7015, 7018, 7019, 7032 & more



Replace with New API Gear Reduction Starter # 10079ND

ST 79LH

Factory Reman 12V

C.C.W. Rotation, **Prestolite** #'s MDU 7016, 7022, 7033 & more
Note: This starter uses SW-83 12V solenoid.



Replace with New API Gear Reduction Starter # 10079NDLH

ST 80

Factory Reman 12V

Fits **Chris Craft** & **Harman Marine**.
3-Bolt Mount with two 3/8" mounting holes and one threaded 5/16" mounting hole
C.W. Rotation



Replace with New API Gear Reduction Starter # 10080ND

ST 80LH

Factory Reman 12V

C.C.W. Rotation
Note: This starter uses SW-98 12V Solenoid.



Replace with New API Gear Reduction Starter # 10080NDLH

REMANUFACTURED & New PRESTOLITE STYLE INBOARD AND I/O STARTER MOTORS

*Exchange core required. New replacements available, see page 54

ST 82

Factory Reman 12V

Fits **Chris Craft** & **Volvo Penta V8**.
Rplc. **Volvo** # 834893
2-Bolt Mount
C.W. Rotation

Replace with New API Gear Reduction
Starter # 10082HI



ST 82LH

Factory Reman 12V

C.C.W. Rotation
Note: This starter uses SW-98 12V
solenoid.



ST 83

Factory Reman 12V

Fits **Chris Craft** Engines using
Prestolite Starter # MDY 7045.
Rplc. **Chris Craft** #'s
16.61-00044, 16.61-00050
C.W. Rotation

Replace with New API Gear Reduction
Starter #10083ND



ST 83LH

Factory Reman 12V

Rplc. **Chris Craft** #'s 16.61-00045,
16.61-00051
C.C.W. Rotation, **Prestolite** # MDY 7046
Note: This starter uses SW-98 12V solenoid.

Replace with New API Gear Reduction
Starter # 10083NDLH



10090

NEW 12V

Fits **Mercury** 888 Engines using
Prestolite Starter MEO 7003
Rplc. **Merc** #'s 50-12872 & 50-69865
C.W. Rotation



10090LH

NEW 12V

Same as 10090 except
this starter is C.C.W. Rotation

This Starter can Replace #10029LH



ST 91

Factory Reman 12V

Fits **Mercury** 470 Engines using
Prestolite Starter # MHA 7016.
Rplc. **Merc** #'s 50-72550A1,
50-72550A2 & 50-72550R2
C.W. Rotation

Replace with New API Starter # 10059



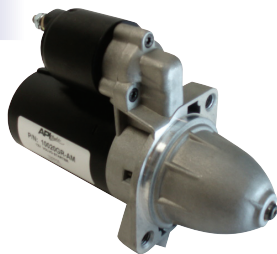
NEW FORD & VALEO STYLE REPLACEMENT INBOARD & I/O STARTER MOTORS FOR VOLVO PENTA, MERCRUISER & OMC

10020GR-AM

NEW 12V

Fits **Volvo Penta** 4 & 6 Cylinder Gas Engines
 Rplc. **Hitachi** Starter w/Aluminum D.E. Housing. Threaded Mounting Holes.
 Rplc. **Hitachi** # S114-237
 Rplc. **Valeo** #'s D6RA11, D6RA40
 Rplc. **Volvo** #'s 859553-0, 840808-0, 834976-3 & 834339-4
 C.W. Rotation

Will replace 10020GR-OE



This Starter has a steel stationary gear & can be used on diesel applications
2000 series engines

10020GR-OE

NEW Valeo 12V

Fits Late Model **Volvo Penta** 4 & 6 Cylinder Gasoline Engines.
 Rplc. **Valeo** Starter #'s D6RA11 & D6RA40.
 Rplc. **Volvo** #'s 872888-3, 873549-0 & 872241-5
 Gear Reduction
 C.W. Rotation



10029

NEW 12V

Fits **Mercruiser**, **OMC**, and **Pleasurecraft** 302 & 351 C.I. Eng.
 Rplc. **Waukesha** # RA122001
 Rplc. **Merc** #'s 50-69865A1, 12872 & 56886
 Rplc. **OMC** #'s 980803, 981821 & 987969
 Rplc. **Volvo** #'s 835635-4 & 841066-4
 D.E. Housing extends 2-3/8" into flywheel. 2-Bolt Mount
 Replacement Solenoid: SW79



Replace this Starter with # 10093

10029LH

NEW 12V

Same as 10029, but this starter is C.C.W. Rotation.
 D.E. Housing extends 2-3/8" into flywheel.
 Replacement Solenoid: SW79

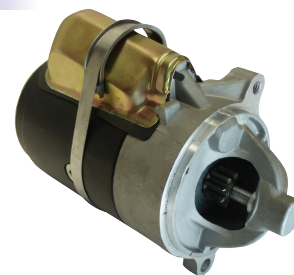
Replace this Starter with # 10090LH



10033

NEW 12V

Ford 4.5" Starter, MOD 1 Style
 Fits 460 **Mercruiser** & **OMC Cobra**
 Rplc. **OMC** #'s 984536, 988013
 2-Bolt Mount w/1 Threaded Hole
 Replacement Solenoid: SW79



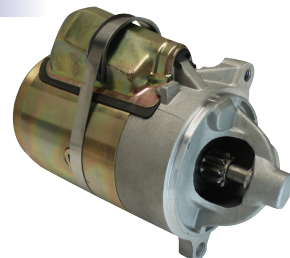
Replace this Starter with # 10094

10033LH

NEW 12V

Same as 10033, but this starter is C.C.W. Rotation.

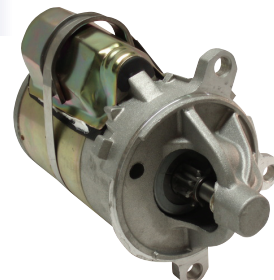
Replacement Solenoid: SW79



10040

NEW 12V

Fits Marine Engines using 2.3L-5.8L **Ford** Block.
 Rplc. **OMC** # 984628
 4" Diameter Field Case
 C.W. Rotation
 3-Bolt Mount

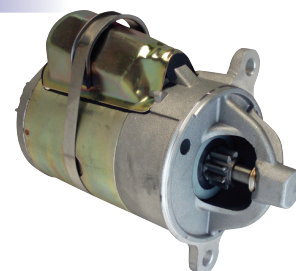


Replacement Solenoid: SW79

10041

NEW 12V

Fits Many Late Model **Ford** Engines.
 2-Bolt Mount
 4" Diameter Field Case
 C.W. Rotation



Replacement Solenoid: SW79

NEW DELCO STYLE REPLACEMENT INBOARD & I/O STARTER MOTORS FOR MERCURISER, OMC, VOLVO PENTA, CRUSADER, MARINE POWER & OTHERS

10059

NEW 12V

Fits **Mercuriser, OMC, Crusader** and others.
Top Mount Fits Counter Rotation V-8 **GM** engines
Bottom Mount Fits **Merc** 470, 4-Cylinder **Ford** Engines.

Rplc. **Merc** #'s 50-47454, 65785A1, 79604A1, A3 50-97499A2, R2, R4
Rplc. **Crusader** # 42090
Rplc. **OMC** #'s 980821, 981289, 982202

This is a High Torque O/E Design w/a Cast Iron D.E. Housing. C.W. Rotation
Replacement Solenoid: SW90



This Starter can be replaced by either 10059SP OR 10059ND.

10059LH

NEW 12V

Fits **Merc, OMC, Crusader** and others.
Top Mount Rear Entry on Bell Housing.
Top Mount fits Standard Rotation Engines.

This is a High Torque O/E Design Starter w/a Cast Iron D.E. Housing.
Rplc. **Merc** #'s 50-17251A3, 47455, 50-808011A1, 65784A1, 76965A1, 76965A2 & 76965A4
Rplc. **OMC** #'s 980820, 981288, 982195, 984982 & 986007

Rplc. **Crusader** #'s 42091, 42150
Marine Power # 0171-000
C.C.W. Rotation
Replacement Solenoid: SW90



This Starter can be Replaced by either 10059SPLH OR 10059NDLH.

10059SPLH

NEW Delco 12V

Same applications as 10059LH.
This is an original **DELCO** 14MT Super Torque Starter.
C.C.W. Rotation

Aluminum D.E. Housing.
Rplc. **Delco** # 19010615
Replacement Solenoid: SW59SP



10059SP

NEW Delco 12V

Same applications as 10059.
This is an original **DELCO** 14MT Super Torque Starter.
Aluminum D.E. Housing.

C.W. Rotation
Rplc. **Delco** # 19010617
Replacement Solenoid: SW59SP



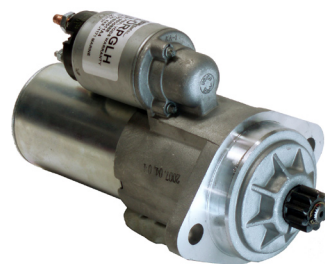
10059DRPGLH

NEW 12V

For use on Standard Rotation Engines.
Same applications as 10059LH.

Rplc. **Mercuriser** # 50-808011A4
Rplc. **Delco** # 9000888
12V, 9-Tooth, C.C.W.
Gear Reduction High Torque Starter

This Starter can be replaced by 10059NDLH.



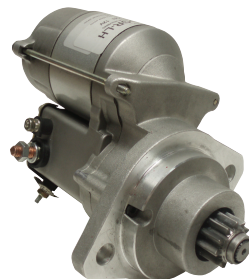
10059ND

NEW 12V

Gear Reduction High Torque **Denso** style starter.

This starter will replace 10059 & 10059SP.

*This is the premier starter for Top Mount Starter Applications.
Call the Factory for Details*



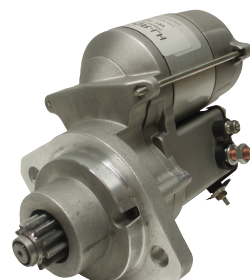
10059NDLH

NEW 12V

Gear Reduction High Torque **Denso** Style Starter.

This Starter will replace 10059LH, 10059SPLH & 10059DRPGLH.

*This is the Premier Starter for Top Mount Starter Applications.
Call the Factory for Details.*



10064

NEW 12V

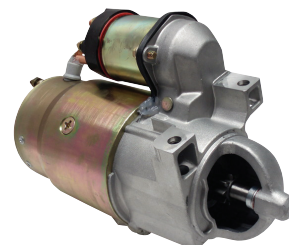
Fits **Merc, OMC, Yamaha** and **Volvo Penta** Using 4-8 Cyl. **GM** Engines 12 3/4" Flywheel.

Rplc. **Merc** #'s 50-32703, 50-45120, 50-46277, 50-46282, 50-59799, 50-69863A1, 50-69864A1, 50-77328A1, 50-79821A2, 50-79822A2, 50-79823A1, 50-806965A2, 50-99417A2

Rplc. **OMC** #'s 381781, 384118, 384198, 981074, 981076, 981078, 982107, 982121, 982200, 983248, 983444, 983790 & 985966.

Straight Across Bolt Pattern
C.W. Rotation. High Torque
Uses 1 Long & 1 Short Mounting Bolt

Replacement Solenoid: SW90



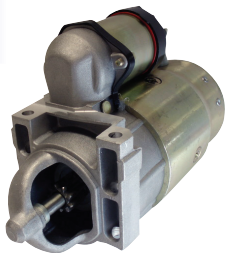
NEW DELCO, HITACHI & DENSO STYLE REPLACEMENT INBOARD & I/O STARTER MOTORS FOR BERKLEY JET, MERCURISER, OMC, VOLVO PENTA, CHYSLER, CHRIS CRAFT, OWENS FLAGSHIP & HARMAN MARINE

10066

NEW 12V

High torque starter for 455
Berkley Jet Marine Engines.

Replacement Solenoid: SW90

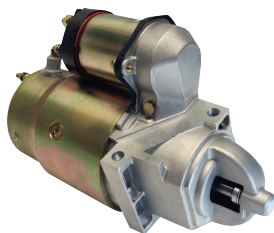


10071

NEW 12V

Fits **Merc**, **OMC**, **Volvo Penta** & others using a **GM** Block 6-8 Cylinder w/a 14" Flywheel.
Rplc. **Merc** #'s 50-12121A2, 50-12177A2, 50-806964A3, A4 50-812428A3, 50-812604A2, 50-99418A2
Rplc. **OMC** #'s 984456, 986505, 3850525, 3853982, 3855177

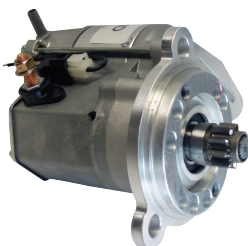
Mounts with 2 Long Bolts in a Staggered Pattern
C.W. Rotation & High Torque
Replacement Solenoid: SW90



10075ND

NEW 12V

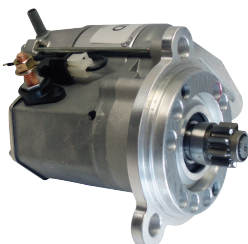
Denso Style Gear Reduction Starter.
Fits **Chrysler Marine** V8 318 C.I. Engines.
Replaces **Chrysler** # 2875928
Replaces **Prestolite** #'s MDT7001, 7021
2-Bolt Mount, 1-Threaded Hole
C.W. Rotation



10075NDLH

NEW 12V

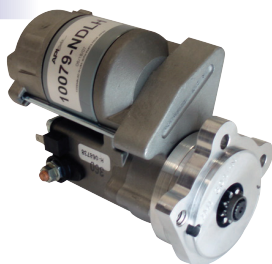
Denso Style Gear Reduction Starter.
Fits **Chrysler Marine** V8 318 C.I.
Replaces **Chrysler** #'s 2095509, 2855927 & 2875927.
Replaces **Prestolite** #'s MDT7010, 7022
2-Bolt Mount, 1-Threaded Hole
C.C.W. Rotation



10079ND

NEW 12V

Denso Style Gear Reduction Starter.
3-Bolt Mount w/two 3/8" mounting holes and one threaded 5/16" mounting hole.
C.W. Rotation
Prestolite #'s MDU 6006, 6007, 6011, 6012, 7015, 7018, 7019, 7032 & more



10079NDLH

NEW 12V

Denso Style Gear Reduction Starter.
C.C.W. Rotation
Rplc. **Prestolite** #'s MDU 7016, 7022, 7033 & more



10080ND

NEW 12V

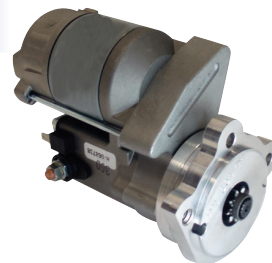
Denso Style Gear Reduction Starter.
Fits **Chris Craft** & **Harman Marine**
3-Bolt Mount w/two 3/8" mounting holes and one threaded 5/16" mounting hole
C.W. Rotation



10080NDLH

NEW 12V

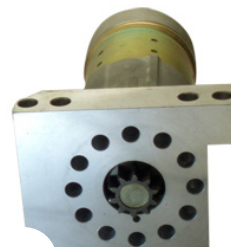
Denso Style Gear Reduction Starter.
Fits **Chris Craft** & **Harman Marine**
C.C.W. Rotation



10082HI

NEW 12V

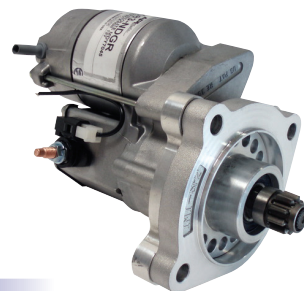
Gear Reduction **Hitachi**-style
Starter to Replace API # ST82 (**Prestolite**)
Starter Used on **Chris Craft** & **Volvo Penta**
Rplc **Vovlo** # 834893



10083ND

NEW 12V

Denso Style Gear Reduction Starter.
Rplc. **Chris Craft** #'s 16.61-00044 & 16.61-00050
C.W. Rotation
Fits **Chris Craft** engines
Using **Prestolite** starter # MDY 7045



10083NDLH

NEW 12V

Denso Style Gear Reduction Starter.
C.C.W. Rotation, **Prestolite** # MDY 7046
Rplc. **Chris Craft** #'s 16.61-00045 & 16.61-00051



NEW REPLACEMENT FORD, DELCO & HITACHI STYLE STARTERS FOR MERCUISER, MARINE POWER, OMC & VOLVO PENTA

10093

NEW 12V

Fits **OMC, Volvo & Pleasurecraft** using Late Model **Ford** 5.0 & 5.8 Litre Engines.

Gear Reduction
2-Bolt Mount

Rplc. **OMC** #'s 987811, 988012, 3854190

Rplc. **Volvo** # 3854190 *Note: This starter can replace API #10029*
Replacement Solenoid: SW100



10094

NEW 12V

Fits 460 **Ford** Engine.

OMC # 988013

PMGR Starter
12-Tooth, C.W. Rotation
2-Bolt mount w/one threaded hole.

Replacement Solenoid: SW100

Note: This starter can replace API # 10033.



10095

NEW 12V

Fits **Merc. OMC & Volvo** V6 & V8 Engs., **GM** Block using a 14" Flywheel Up To 2000. For 2001 & up Engines use API # 10099.

High Torque Gear Reduction with Staggered Bolt Pattern.

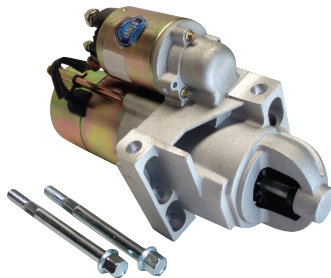
Rplc. **Marine Power** # 0174-000

Rplc. **Merc** #'s 50-806964A2, A3 50-807904A1, 50-812604A2, 50-812428A3, 50-822330A2

Rplc. **OMC** #'s 3854751, 3855177, 3856004

Rplc. **Volvo** #'s 3854751 & 3856004

Replacement Solenoid: SW105



BK95 Included in Box

BK 95

Mounting Bolt Kit for API Starter #s 10095, 10099, 10101 & 10105



BK 96

Mounting Bolt Kit for API Starter # 10096



10096

NEW 12V

Fits **Merc. OMC, Volvo**

4-8 Cylinder Engines w/**GM** Block using a 12 3/4" Flywheel.

Straight Across Bolt Pattern
High Torque Gear Reduction

Rplc. **Marine Power** # 0172-000

Rplc. **Merc** #'s 50-806963A2, 50-806963A4, 50-806965A2 & 50-812429A2

Rplc. **Volvo** #'s 3854750, 3856003

Rplc. **OMC** #'s 988217, 3954750, 3850526, 3855882, 3858463, 3856003

Rplc. **Delco** #'s 9000763, 9000820, 9000822

Replacement Solenoid: SW105



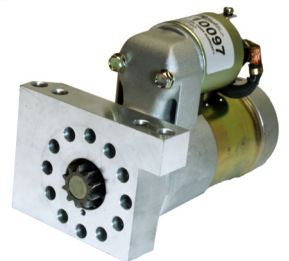
BK96 Included in Box

10097

NEW 12V

Hitachi Style Gear Reduction Starter.

This is a High Performance Starter Used in Racing Applications. This Starter Can Replace 10064, 10071, 10095, 10096, 10099, 10101, 10105 & 10106



10099

NEW 12V

Fits all Late Model **Merc. Volvo, Marine Power** and others

Using a 14" Flywheel & Bottom Mount Starter with a Staggered Bolt Pattern

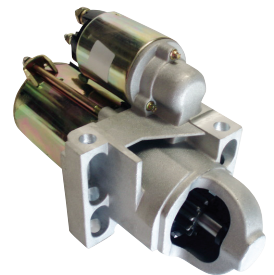
High Torque Gear Reduction

Volvo #'s 3587625, 3860565 & 3885317

Merc #'s 50-863007A1, 50-864340A2

Delco #'s 9000840, 9000884

12V 11-Tooth C.W. Rotation,



Use on late model 3.0L Engines with a 14" Flywheel

BK95 Included in Box

This starter will replace 9-Tooth Starters.



STARTER MOTORS FOR MERCUISER, CRUSADER, INDMAR, PLEASURECRAFT, CUMMINS, PENINSULAR, PERKINS & WESTERBEKE

10101

NEW 12V

This is a High Torque **Leece Neville** Style Gear Reduction Starter.
Rplc. # 10095

This starter is used specifically on **Volvo** 3.0 GSM-C engines. RPLC **Volvo** # 3860566

This starter has a 6 magnet field housing design and a steel stationary gear.

BK-95 Included in Box



10103

NEW 12V

Fits 6 Litre **GM** Engines
Used by **Crusader, Indmar & Pleasurecraft.**

Replaces **PCM** # RA122109

Delco # 9000887

Mounting Pattern: 2-Long Bolts
With a Slight Offset.

Replacement Solenoid: SW105

BK95 Included in Box



10105

NEW 12V

11 Tooth, C.W. Rotation

Fits **Mercruiser**

Race sterndrive 500 **Bulldog**

500EFI, 525 EFI, 575SCi,

600SCi, 700SCi, **Scorpion** 377,

Rplc. **Merc** # 50-8M8021116

BK95 Included in Box



10050ND

NEW 12V

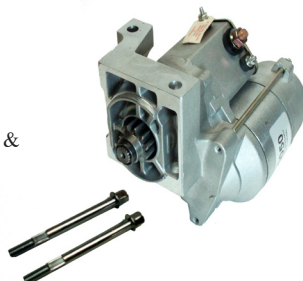
11-Tooth C.W. Rotation

Denso Type Gear Reduction Starter
used on **GM** 8.1L Engines.

This starter can replace API #'s 10095 & 10099.

No plastic gears inside this starter.

BK95 Included in Box



15009

NEW 12V

10-Tooth C.C.W. Rotation

Replaces **Prestolite** Starter

Used on **Peninsular** Engines.

Replaces **Arco** # 12206



15015

NEW 12V

10-Tooth C.W. Rotation

Used on **Perkins & Westerbeke** Engines

Replaces Westerbeke # 38384



15016

NEW 12V

10-Tooth C.C.W. Rotation

Replaces **Westerbeke** # 16762



15017

NEW 12V

12-Tooth C.W. Rotation

Used on **Perkins** Engines.



15018

NEW 12V

9-Tooth C.C.W. Rotation

Used on **Westerbeke** Diesel.

